



# GAT MONTHLY MEMBERSHIP PROGRESS REPORT

Results as of: 5/31/2021

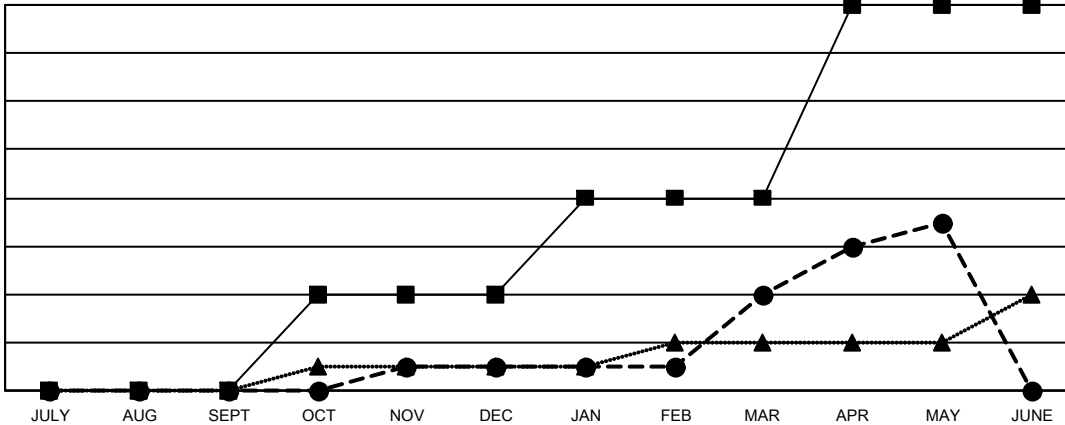
Multiple District 11

LOCATION: MICHIGAN

Clubs			
RESULTS FOR 2020-2021			
QUARTER	NEW CLUB GOAL	NEW CLUBS	DROPPED CLUBS
JULY/AUG/SEPT	0	0	2
OCT/NOV/DEC	4	1	0
JAN/FEB/MAR	4	3	3
APR/MAY/JUNE	8	3	0

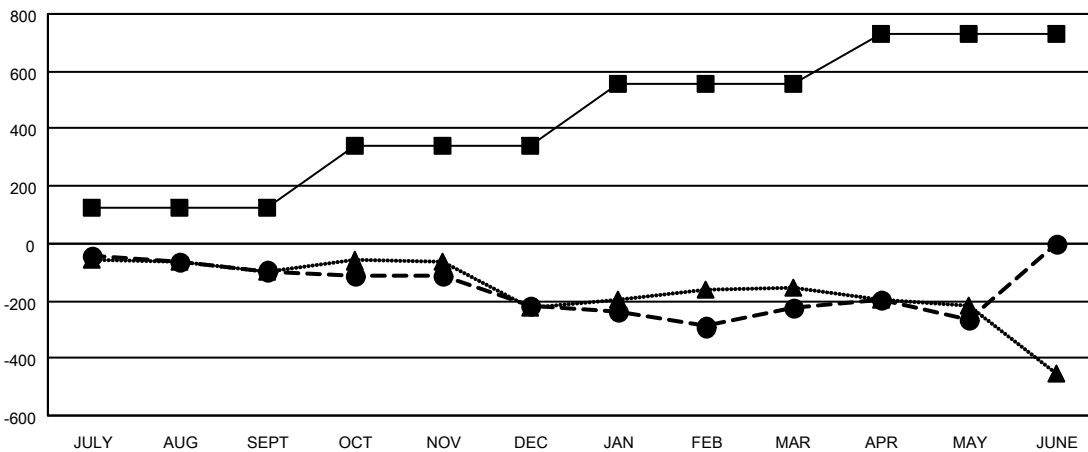
Members			
RESULTS FOR 2020-2021			
QUARTER	MEMBER GROWTH NET GOAL	MEMBER GROWTH ACTUAL	DROPPED MEMBERS ACTUAL (including transfers)
JULY/AUG/SEPT	126	137	214
OCT/NOV/DEC	213	232	336
JAN/FEB/MAR	220	259	240
APR/MAY/JUNE	170	162	199

GOALS AND ACTUAL NEW CLUBS CUMULATIVE



- - CURRENT YEAR GOALS FOR NEW CLUBS
- - CURRENT YEAR ACTUAL NEW CLUBS
- ▲ - LAST YEAR ACTUAL NEW CLUBS

GOALS AND ACTUAL MEMBERS CUMULATIVE



- - MEMBER GROWTH NET GOAL
- - MEMBER GROWTH ACTUAL
- ▲ - LAST YEAR MEMBERSHIP ACTUAL

DROPPED CLUBS: 5	
<u>DROPPED MEMBERS</u>	
DECEASED	199
CLUB CANCELLED	59
OTHER	731
<b>TOTAL</b>	<b>989</b>

166 CLUBS OF 377 ADDED 1 OR MORE NEW MEMBERS
<a href="#">CLICK HERE FOR CUMULATIVE MEMBERSHIP DATA</a>

<u>GENDER DISTRIBUTION</u>	
MALE	6,393 (66.89%)
FEMALE	3,165 (33.11%)
TOTAL FAMILY UNIT MEMBERS	1,933
FAMILY MEMBERS PAYING HALF DUES	989